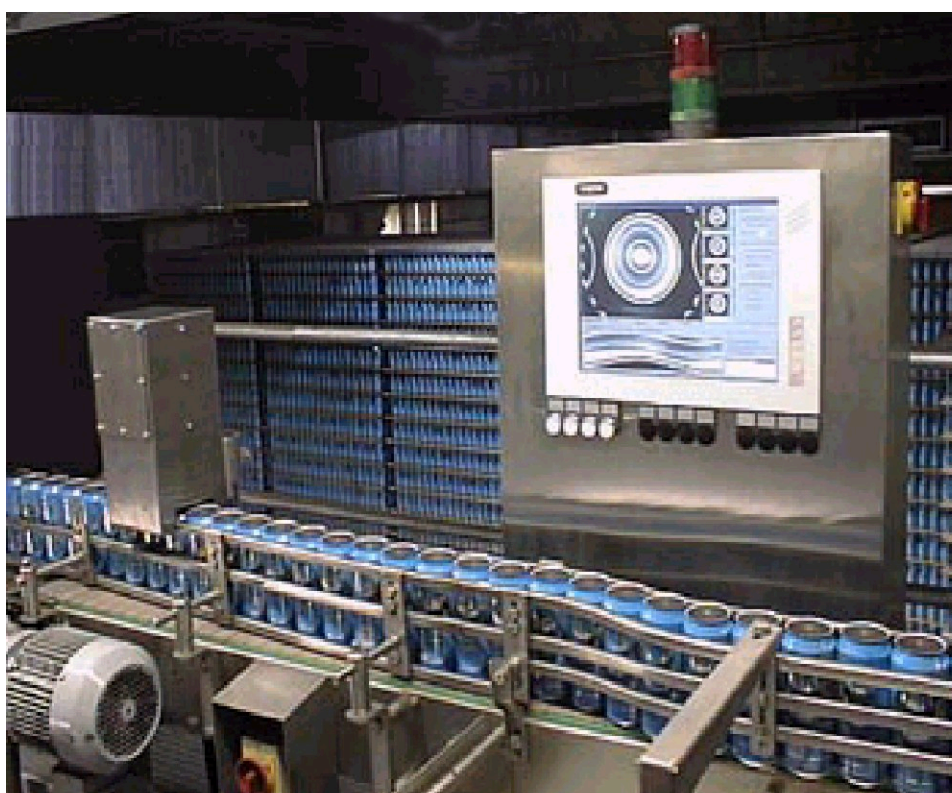


SYMPLEX CANKON 33

One-Camera System
for empty Can Inspection
up to 100.000 c/h



- 100.000 cans per hour
- Detects deformations in wall and rim areas, finds deposits in the can
- Minimum space requirement
- Inspects aluminium and steel cans
- Inspects all sizes
- Easy operator control via TFT touch screen
- Software based contact-free inspection, operating platform: Windows 2000
- Remote maintenance and tele-diagnostics
- Supports operation via line monitoring system network
- Hose-down tolerant (Nema 4x)



BULL
INFORMATIK & INDUSTRIE
ELEKTRONIK

CENTRO
KONTROLLSYSTEME

STRATEC
CONTROL-SYSTEMS

SYMPLEX
VISION SYSTEMS

SPEED AND FUNCTIONS

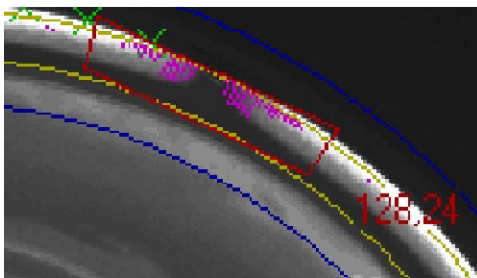
CANKON33 is designed to suit the inspection conditions at can filling plants. It can control up to 100.000 empty cans per hour. The system finds structural defects such as deformations at the wall and the rim as well as deposits within the can. A fast ejection unit reliably removes the defective containers from the line at full production speed.



SAFETY

Mounted immediately in front of the filling station, **CANKON33** makes sure that only flaw-free cans enter this sensitive unit, in which every deformed can might cause messy jams and result in lengthy production delays.

Furthermore, **CANKON33** improves your product safety by ensuring that no deposits are left in the cans.



SPACE

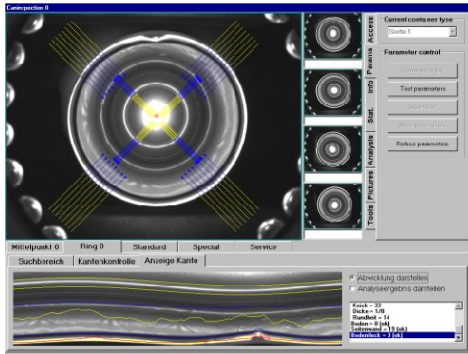


The small amount of required mounting space plus its modular conception make the **CANKON33** solution unique. Requiring only 200mm of conveyor length, the system can be mounted in sites where other devices do not fit in. Thanks to the modular design, you can mount the separate modules (camera head, computer unit and rejecter) at different spots, thus reducing the required space at critical positions even more.

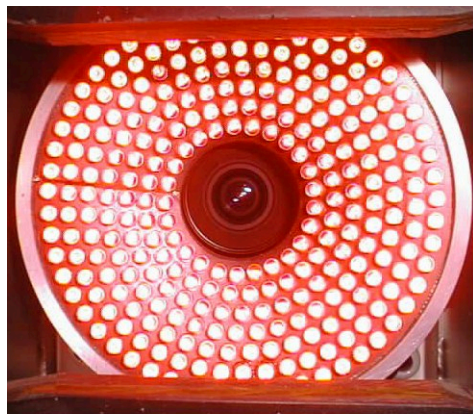
SURVEILLANCE

Connect **CANKON33** to your line monitoring system via network to survey eject rates and machine states from your control room. Due to the contact-free design of the system, the set-up time reduces to a minimum.

The operation of this software-based inspection solution is more than simple. Founding on Microsofts Windows 2000 operation system, the necessary parameters can easily be set in situ, aided by remote-maintenance and tele-diagnostics via virtually any telephone network.



SOLUTIONS



The high performance illumination concept, relying on the most advanced LED-driven lighting fixtures on the market, makes sure that cankon's electronic eye, a high resolution CCD-chip, tracks down even the tiniest defects and deposits.

In this manner, **CANKON33** reaches an optimum inspection performance.

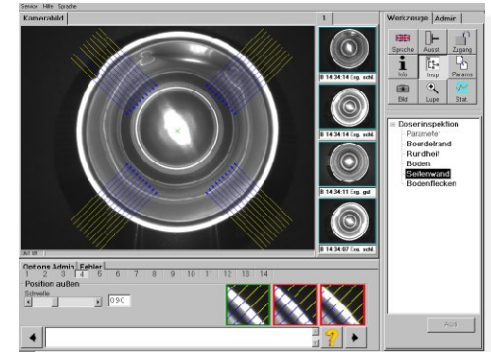
PUSHER



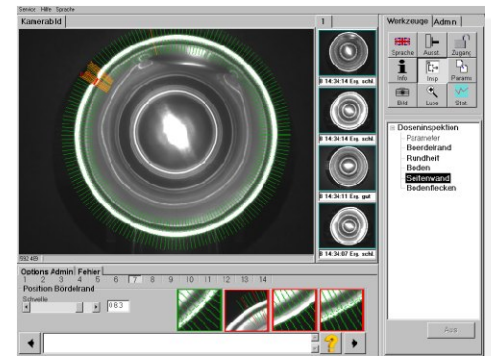
A high speed ejector unit makes sure that each and every defective or contaminated specimen is reliably removed from the production line. This applies to maximum line speeds too. Even successive samples with defects are handled without any problems.

FEEDBACK

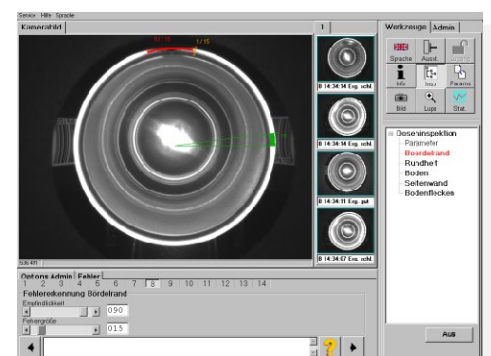
All necessary settings are built up step by step. Displays and images visualize all relevant information and provide the users with a direct feedback concerning their adjustments. Additional illustrating images function as examples and help finding the right setting.



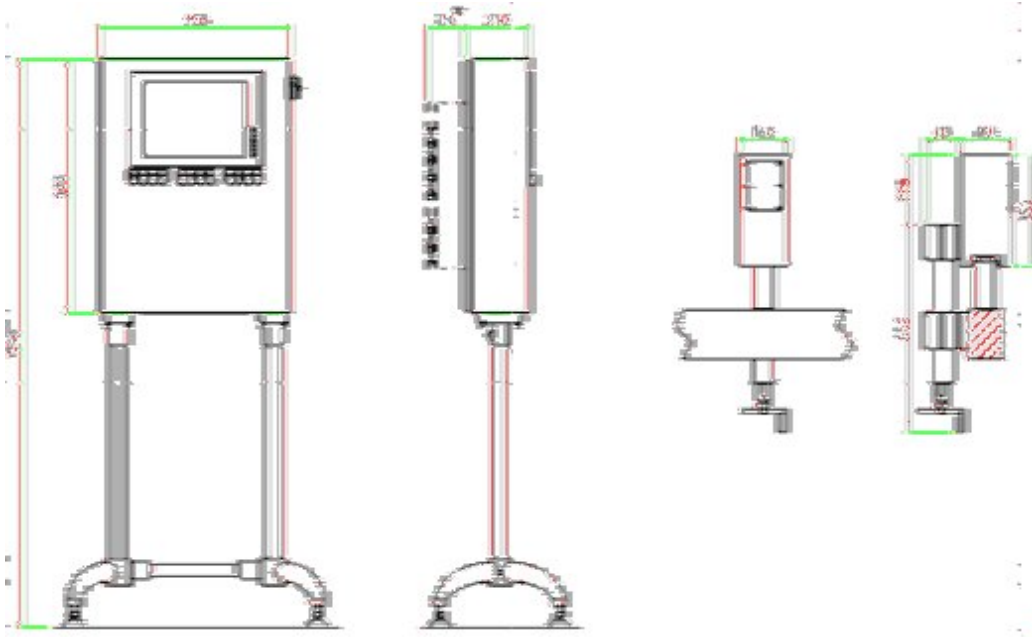
A self-explanatory colour code allows identifying defects at first sight. The program features drag bars to make the adjustment of the parameters easier. During operation, you can access separate inspection steps and their parameters (diagnosis).



The program defines a fixed sequence of adjustment steps for new types. Help texts appear in the program to inform the user on which adjustment to carry out next and on how the result must look.



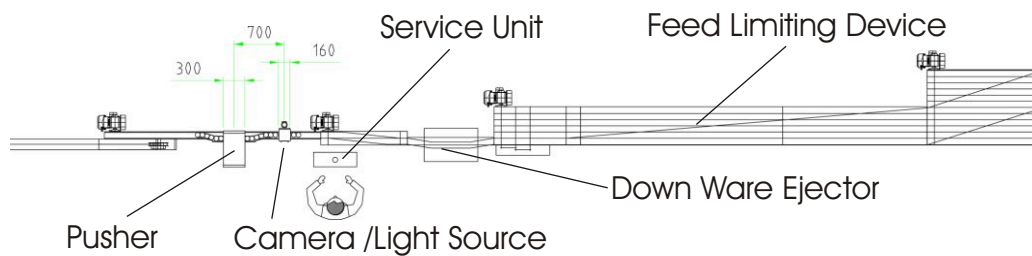
SKETCH



Service Unit (*Optional Conditioner)

Camera / Light Source

LINE TOP VIEW



Pusher

Camera / Light Source

Service Unit

Down Ware Ejector

Feed Limiting Device

BULL[®]
TECHNOLOGY

BULL
INFORMATIK & INDUSTRIE
ELEKTRONIK

BERNHARD BULL COMPUTER GmbH
Ankerstrasse 73
75203 Königsbach-Stein/Germany
Telefon (+49) 72 32-40 06-0
Telefax (+49) 72 32-40 06-25
E-mai: info@bull.com
<http://www.bull.com>

CENTRO
KONTROLLSYSTEME

CENTRO KONTROLLSYSTEME GmbH
Hagener Strasse 75
57072 Siegen/Germany
Telefon (+49) 2 71-48 96 3-6
Telefax (+49) 2 71-48 96 3-74
E-mail: info@bull.com
<http://www.bull.com>

STRATEC
CONTROL-SYSTEMS

STRATEC CONTROL-SYSTEMS GmbH
Ankerstrasse 73
75203 Königsbach-Stein/Germany
Telefon (+49) 72 32-40 06-0
Telefax (+49) 72 32-40 06-25
E-mail: info@bull.com
<http://www.bull.com>

SYMPLEX
VISION SYSTEMS

SYMPLEX VISION SYSTEMS GmbH
Grüntenstrasse 10A
80686 München/Germany
Telefon (+49) 89-55 27 98-0
Telefax (+49) 89-55 27 98-79
E-mail: info@symplex.de
<http://www.symplex.de>